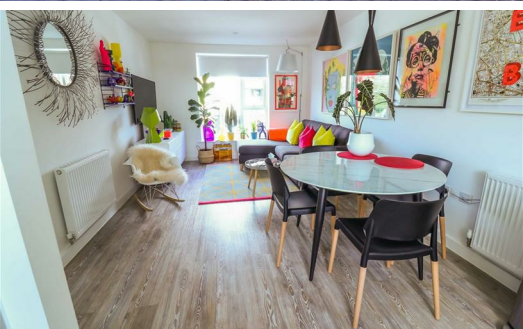




FORTUNE & COATES

The People's Estate Agent

www.fortuneandcoates.co.uk



12 Barnfield Way, Harlow, CM17 9TN

Guide price £290,000

Guide Price £290,000-£300,000. Situated in the always popular Newhall development is this two double bedroom, bright and airy first floor apartment in Barnfield Way. Built from new in 2020, this immaculately presented home offers two double bedrooms, an open plan living/kitchen area, and a main family bathroom with en-suite to master bedroom. Externally, you have two allocated parking spaces, and location wise you are within short walking distance to local shops and amenities, and also fall within the catchment area for Newhall Primary school.

Tenure: Leasehold.
250 years remaining on lease.
Service charge: 1213.24 PA.
Ground rent: £10 per year.

Open Plan Lounge/Kitchen/Diner 22'11 x 10'7 (6.99m x 3.23m)

Open plan living area with feature windows. Contemporary fitted kitchen. Laminate worktop. Upstand and glass splashback behind cooker. Stainless steel 1½ bowl sink unit with chrome mixer tap. Stainless steel single oven with electric ceramic hob and cooker hood. Fully integrated fridge/freezer. Integrated Washer /dryer . Integrated dishwasher.

Bedroom One 10'4 x 9'11 (3.15m x 3.02m)

Feature window, radiator. Spotlights to ceiling.

Bedroom Two 9'0 x 12'6 (2.74m x 3.81m)

Window to front aspect, radiator. Spotlights to ceiling.

Bathroom

Sanitary ware with chrome mono mixer and 'driftwood' vanity top. Half height tiling around main walls of the bath (where hand held shower). Half height tiling to all sanitary ware wall(s). White double ended bath with 'driftwood' bath panel. Chrome finish heated towel rail. Amtico flooring.

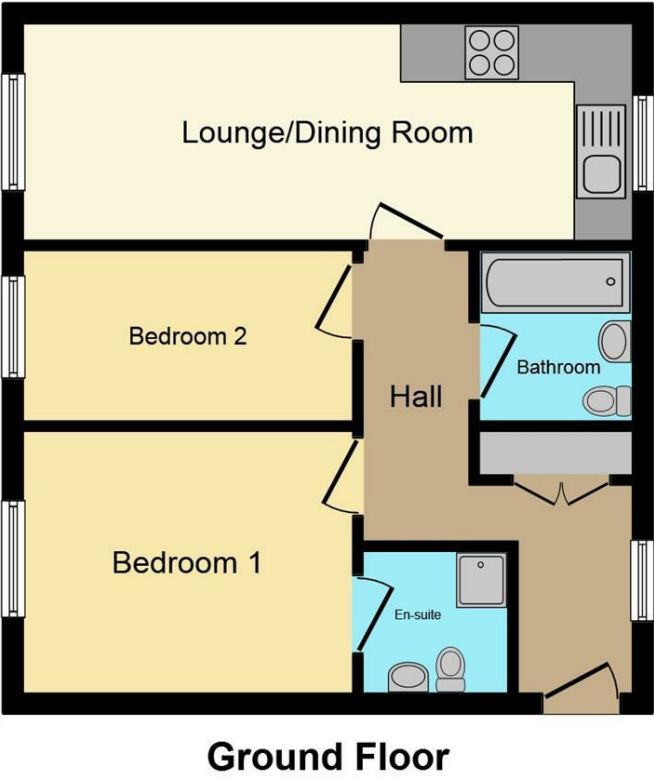
En-Suite

Sanitary ware with chrome mono mixer . Full height tiling around main walls of the shower, half height tiling to all sanitary ware wall(s) Shower with concealed shower mixer and shower screen. Chrome finish heated towel rail. Amtico First range flooring, spot lights to ceiling.

External

Two Allocated Parking Bays

Floor Plan



This Floor Plan is for illustration purposes only and may not be representative of the property. The position and size of doors, windows and other features are approximate. Unauthorized reproduction prohibited. © PropertyBOX

Area Map



These particulars, whilst believed to be accurate are set out as a general outline only for guidance and do not constitute any part of an offer or contract. Intending purchasers should not rely on them as statements of representation of fact, but must satisfy themselves by inspection or otherwise as to their accuracy. No person in this firms employment has the authority to make or give any representation or warranty in respect of the property.

Energy Efficiency Graph

